

Laser Cutter Standard Usage Guide

The following instructions are steps for sending jobs to the standard Epilog **24 x 36"** and **18 x 24"** laser cutter machines:

Starting Up Machine:

1. Login on lab PC
2. Turn on laser (left side)



3. Turn on air assist (back wall)



Opening Software:

1. Open AutoCAD on PC desktop
2. Open template DWG file on desktop
(Laser 24 x 36" Template) or
(Laser 18 x 24" Template)
3. Open your DWG file and copy-paste your lines into the template file

Final File Prep:

1. Keep lines within 1/8" margin of template to prevent errors
2. Explode all grouped lines
(Highlight all lines > type "explode")
3. Delete all overlapping lines
(Highlight all lines > type "overkill")
4. Consolidate lines to upper-left corner of template

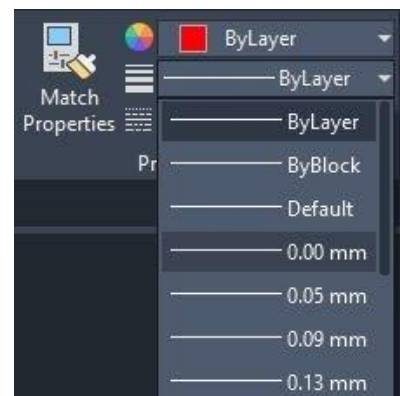
5. Place cut lines into red "lasercut" layer and place score lines into yellow "laser score" layer



6. Change all line color properties to "ByLayer"

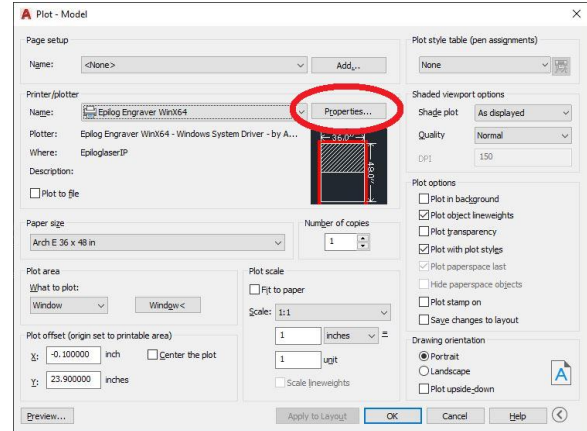


7. Change all line width to "0.0mm"

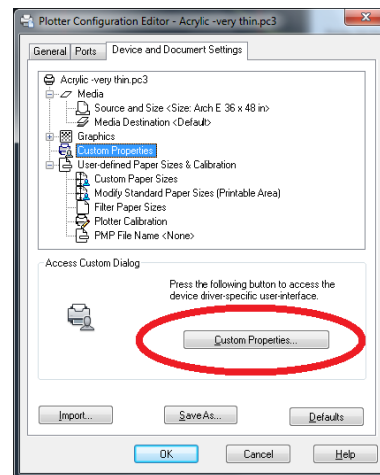


Print Properties Setup:

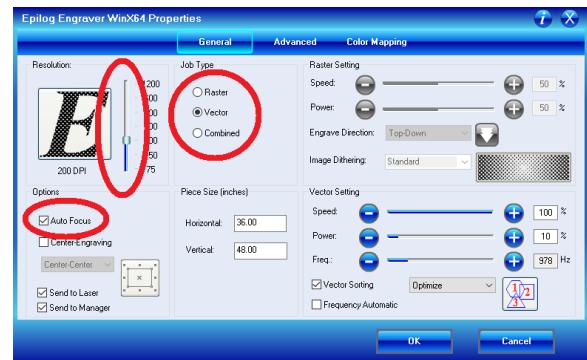
1. File > Print
2. Click "Properties"



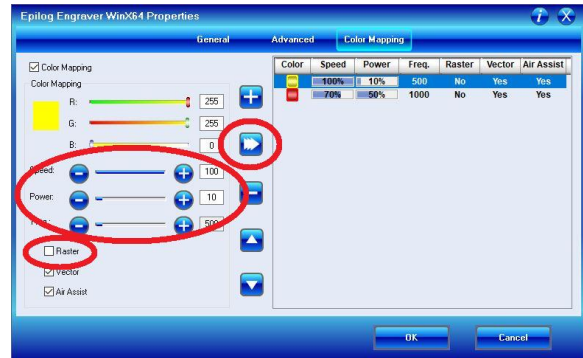
3. Click "Custom Properties"



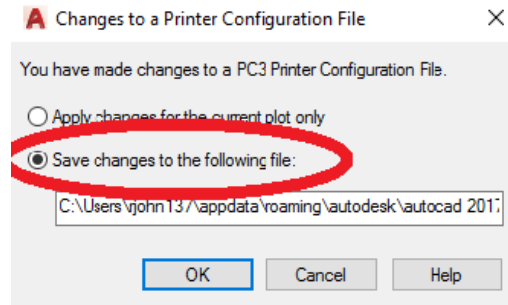
4. Select "Vector" job type
5. Check ON "Auto Focus"
6. Lower DPI to below 600



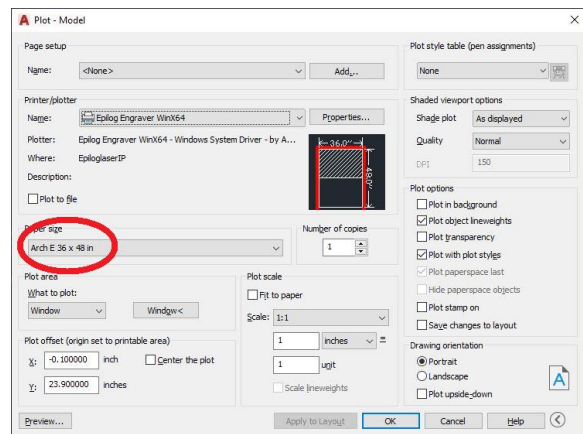
7. Check ON “Color Mapping” checkbox
8. Change settings for red (cut settings) and yellow (score settings) ONE AT A TIME
9. Uncheck “Raster” checkbox
10. Save settings for color by selecting “>>>” and confirm settings are saved to righthand side
11. Press OK twice



12. Select “Save changes to the following file” to save settings, then click OK

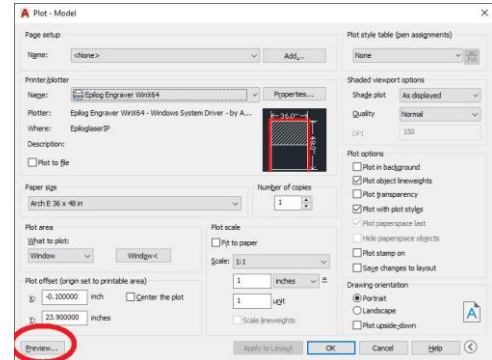


13. Change paper size to “ARCH E 36 x 48”
Ignore the dimensions, they do not reflect the laser size

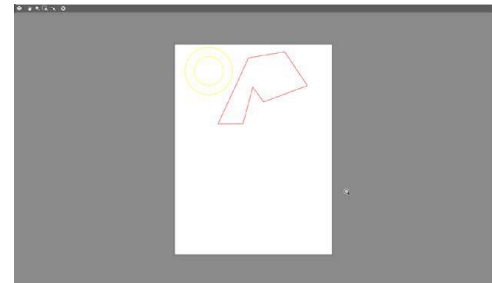


Test Preview:

1. Click "Print Preview"



2. If the preview does NOT show the lines at the top half of the sheet, go back and review settings
3. If the settings are correct, exit out of preview and click OK to send file to machine



Starting the Sent Job:

1. Load material to upper left corner of laser bed
Lower table using inside front left switch to fit thicker materials
2. Press green "GO" button to start the latest sent job
3. To pause a currently running job, press red "STOP" button
4. To end and reset a paused job, press "RESET" button

